

Installing Windows 95/98 drivers of the AJP machine.

PREPARATION: What do you need for the installation?

You will need the **Windows 95 CD-ROM** and the **Driver CD-ROM** that came with your notebook.

STEP 1: Remove any PCMCIA cards

If you have already inserted any PCMCIA cards into any of the sockets, remove them using the eject buttons located alongside the sockets.

STEP2: Installing the Universal Serial Bus Driver

Insert the **Windows 95 CD-ROM** and double click on the **My Computer** Icon, the **My Computer** folder will open. Double click on the icon for the CD ROM drive and then double click the **Other** folder to open it. Then double click on the **Updates** folder. You should now see a **USB** folder, double click this to open it. Run the **usb supp** program by double clicking it.

A pop-up window will appear asking if you want to install the USB supplement on your system, click on **Yes**, read the license agreement and click **Yes** to agree to it. The install program will launch **Scandisk**, install its self, and ask to reboot the system, click **OK** to allow this and the system will reboot. Once the system has rebooted the supplement is installed.

STEP 3: Installing the TX Chip driver

With the **Driver CD-ROM**, in the **CD-ROM** drive, double click on **My Computer**. Then double click on the CD-ROM icon to open that as well. Open the **txpatch** directory by double clicking. Double click the **Setup** program. You will now see a **Welcome** screen, click **Next**. This displays a software license, read this and click on **Yes**. On the next screen click on **Next** to continue. The installation will now start, click on **OK** when asked to reboot. The notebook will now reboot and new hardware will be detected and installed. In order to finish setting up the new hardware you will be asked to restart the computer again, click on **Yes**, the machine will reboot and yet more hardware will be installed. Once this has completed you can continue with the next step.

STEP 4: Installing the Display driver

Insert the **Driver CD-ROM**. Right click on any clear part of the screen and click on **Properties**. You will now see the **Display Properties** window. Click on the **Settings** tab and click on the **Advanced Properties** button. In the **Adapter** window click on the **Change** button and click on the **Have Disk** button. Click **Browse**. Click on the Drives bar and select **d:**. Double click the **video** folder, then double click the **Win95** folder. The video adapter will now be identified as **S3VMX.inf**. This is the correct driver for the chip so click **OK**, you will be taken back to the **Advanced Display Properties** window with **Adapter** as the active selection. Click **Apply** and then click **OK** to fix the changes. You should now find your self back at **Display Properties \ Settings**.

For 12.1" Screen.

Next you need to set up the monitor. Click on **Advanced properties** and select the **Monitor** tab. Click on **Change**. On the next screen select **(Standard Monitor Types)** under **Manufactures** and **Laptop Display Panel (800x600)** under **Models** and click **OK**. Now click on **Apply** and then **OK**. This will take you back to the **Display Properties** window. Click on the **Desktop area** and move the arrow to the **800 by 600**. Set the **Colour Palette** to **High Colour (16bit)**. Now click on **Apply**. You will see a window telling you to restart your computer. Click on **Yes**, the machine will reboot, your display is now setup.

For 13.3" or larger Screen.

Next you need to set up the monitor. Click on **Advanced properties** and select the **Monitor** tab. Click on **Change**. On the next screen select **(Standard Monitor Types)** under **Manufactures** and **Laptop Display Panel (1024x768)** under **Models** and click **OK**. Now click on **Apply** and then **OK**. This will take you back to the **Display Properties** window. Click on the **Desktop area** and move the arrow to the **1024 by 768**. . Set the **Colour Palette** to **High Colour (16bit)**. Now click on **Apply**. You will see a window telling you to restart your computer. Click on **Yes**, the machine will reboot, your display is now setup.

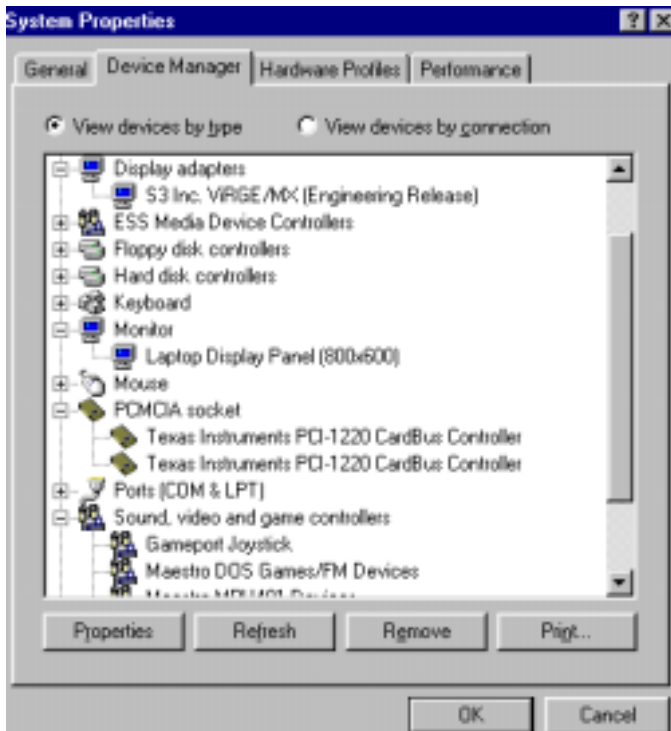
If you find that the screen font is too small, go to **Display Properties, Settings** and under **Font size** select **Large Fonts**, click on **Apply** (you will be asked to restart for this to take affect). You can also change the colour depth here.

STEP 5: Installing the Sound drivers

Insert the **Driver CD-ROM**. Click on the **Start** button; go to **Settings** and click on **Control Panel**. Double click on the **System** icon. In the **System Properties** window click on the **Device Manager** tab. Once in **Device Manager** double click on the **Other devices** heading and remove the device marked **PCI Multimedia Device** (to do this, highlight **PCI Multimedia Device**, click the **Remove** button and answer **Yes** to the confirmation window. At this point restart the computer, by going to **Start, Shutdown** and then restart computer.

As the computer boots back into Windows, a **Windows has found new hardware** dialogue box will appear. Windows will then prompt to install the software for this device. Click **Next**. Then click on **Other locations**. Click on **Browse** and select **D:**. Double click on the **Audio** folder, then double click on the **Win95** folder. Click **OK** to accept the path, then **OK** to confirm it. Another window comes up, again here click on **Browse**, select **D:**, double click on **Audio**, then double click on **Win95**. Then click **OK**. Then click **OK** again. The **Windows 95 CD** has to be inserted into the CD-ROM Drive. Click **OK**. Then click **Finish** to install the drivers.

STEP 6: Installing the PCMCIA Socket Drivers.



Insert the **Driver CD** in the CD-ROM Drive. Go to **Device Manager** and under **Other Devices** double click on **PCI CardBus Bridge**. Then Click on the **Driver** tab. Click on **Update Driver**. A dialogue window comes up asking if windows should search for the driver. **Yes (Recommended)** should already be highlighted. Click **Next**. Click on **Other Locations**, then click **Browse**. Double click on the **CD-ROM** drive. Then double click on the **PCMCIA** folder. Then double click on the **Win95** folder. Then click **OK**. It then takes you back to the previous window, where **OK** is pressed. Then click on **Finish**.

It will then prompt for the **Windows 95 CD**. Put the CD in the drive then click **OK**. Close down this window and repeat for the other **PCI CardBus** in **Other Devices**.

NB. This is important. - Ensure that you have no sections for **PCMCIA Sockets**, or **Other Devices**.

You will be asked to complete a wizard to enable 32bit-card support, answer the both the questions **No** and **Next**, answer **Yes** when asked to reboot the computer. When the computer reboots you will receive a warning that several files being installed are older than the ones already installed. You will be asked if you want to keep the newer files (the ones already installed) answer **Yes** to all of these dialogues.

Once the notebook reboots go to **Control Panel, System** and **Device Manager**, you should have two **Texas Instruments PCI-1220 CardBus Controllers**, if you don't have these listed make sure you installed the **TX Patch** (Step2 of this guide) and try this section again.

You will find a **PCIC or compatible PCMCIA controller** listed with a exclamation mark. Remove this by highlighting it, clicking **Remove** and answering **Yes** to the confirmation dialogue.

NOTES

This tutorial presumes you are using the OSR/2 release of Windows 95. This is the "OEM Only" version supplied by AJP.

Appendix: Installing the Windows 95 operating system.

Please think carefully before re-installing Windows 95 on your machine. Problems can often be resolved without

resorting to this. If in doubt contact AJP Technical Support.

There are two ways to re-install Windows 95 as supplied by AJP,

Installing from inside Windows 95 – AJP do NOT suggest this method. Running the Set-up program will theoretically keep all your programs and data (AJP CAN NOT BE HELD LIABLE FOR ANY INFORMATION HELD BY YOUR SYSTEM IN ANY WAY. SEE YOUR 95 MANUAL FOR MORE DETAILS). It may keep some drivers. Installing in this way will not replace the registry and/or systems files and so may not cure all the problems you might be experiencing. This method of installation may cause problems as many programs, (such as Internet Explorer 4.x amongst others), install updated systems files on your machine, re-installing the older versions of these files **WILL** cause problems.

Full install – Fdisking or re-formatting your hard drive and then booting the system from the supplied CD-ROM Set-up Boot Disk with the CD in the drive will wipe your hard disk and install a totally bare version of 95. This installation should only be attempted as a last resort. Back up all important data before attempting this. An AJP TS document is available covering this procedure (**Using Fdisk to Reinstall a System**).

AJP CAN NOT BE HELD LIABLE FOR ANY CONSEQUENCES THAT MIGHT ARISE FROM ATTEMPTING ANY OF THE ABOVE PROCEDURES. THE INFORMATION IS PROVIDED ON AN AS IS BASIS. PLEASE READ YOUR E.U.L.A IN THE WINDOWS DOCUMENTATION FOR FULL LEGAL DETAILS.

We hope the above information is sufficient to enable you to set up your computer. Meanwhile if you have any problems do not hesitate to contact our Technical Support Department.

Telephone	0208 - 208 – 9799
Fax	0208 - 208 – 9717
Email	support@ajp.co.uk
Web	www.ajp.co.uk
Mon. – Fri.	9:00 - 5:30
Sat	9:00 – 2:00