

# Using the AJP 6200 and docking station with Windows 95.

## ***PREPARATION: What do you need for the installation?***

---

The followings are required for the installation: An AJP 6200 with BIOS version 5 - 10 or later (shown as the last few digits of the first line on boot up), if your BIOS is earlier than this please contact technical support.

## ***Initial Set up***

---

Windows 95 stores hardware details in **Hardware Profiles**, when the machine first docks it will create a new profile called **dock 1**. You will have to set this up the first time the machine is docked.

## ***STEP 1: Docking the 6200***

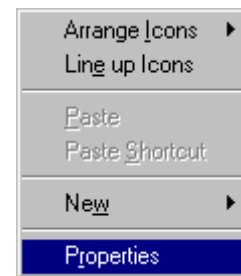
---

Ensure that both the 6200 machine and docking station are powered down. Prepare the 6200 for docking by removing all devices except for PCMCIA cards that might be connected to the machine. Slide back the panel on the back flap of the 6200 and expose the docking station connector. Place the 6200 on the docking station so it hooks onto the two prongs. Finally push the 6200 back until the two units connect. Finally plug the docking station into the mains, both the 6200's and docking station's power lights will indicate they are both receiving power.

## ***STEP 2: Creating the Docked Hardware Profile***

---

Power up the 6200 in the normal way, you will notice the screen resolution is incorrect at this stage. Windows will start to detect new hardware for the new profile, allow it to finish this. When completed windows will report it has created a new configuration called "**Dock 1**". Click **OK**. Finally reset the display resolution by left clicking any blank area of the desktop, clicking properties from the resulting menu. Select settings from the "**Display Properties**" screen and make the following changes. Set **Desktop Area** to **800 x 600** and colour palette to your preferred depth. Finally click **Apply** and **OK**, then restart the computer as requested. You now have a hardware profile of your laptop when docked.



Note that any hardware installed while the system is docked will not be available when undocked. See the windows documentation for further details.

Power up the 6200 in the normal way, you will notice the screen resolution is incorrect at this stage. Windows will start to detect new hardware for the new profile, allow it to finish this. When completed windows will report it has created a new configuration called "**Dock 1**". Click **OK**. Finally reset the display resolution by left clicking any blank area of the desktop, clicking properties from the resulting menu.

Select settings from the "**Display Properties**" screen and make the following changes. Set **Desktop Area** to **800 x 600** and colour palette to your preferred depth. Finally click **Apply** and **OK**, then restart the computer as requested. You now have a hardware profile of your laptop when docked.

Note that any hardware installed while the system is docked will not be available when undocked. See the windows documentation for further details.

## ***Setting up the second serial port***

---

Switch off your notebook computer and reboot. Watch the screen closely as the machine reboots, press **Ctrl + Alt + S** when prompted. This will start the **CMOS Configuration Utility**, this is here you can alter the setting of the systems **BIOS**. You can use the touchpad here, click on **Devices**. Click on **Com Ports**, this will open a second window showing the settings for the serial ports. **Com B**, is the serial port 2. Ensure this is set to **Serial Port** and not **IRDA** by clicking on **Serial Port**. This will disable the notebooks infra red port, if you wish to use this in the future you will have to reverse these changes when necessary. Click on **OK**. Click on **Exit** and select **Save And Reboot**, the program will ask you for conformation, click **OK**. The system will reboot and the second serial port will now function. Windows will detect the port and install software for it as it loads.

### ***Using an external mouse and keyboard***

The following presumes you wish to use a serial mouse and a keyboard. You will need the keyboard to PS/2 connector supplied with your 6200. Ensure the 6200 is docked and both units are powered down. Use the PS/2 connector cable to connect the keyboard and plug the mouse into the serial port labelled "1".

Turn on the machine and enter the CMOS setup by pressing **Ctrl + Alt + S** together when prompted by the boot up sequence. Use the mouse to click on system, click on enable pointing device to disable the internal track pad. Click on **Exit**, click **Save And Reboot** and finally **OK**. The machine will reboot into windows and detect the external mouse. You may be prompted for the windows disk, if so insert it and click **OK**. Should windows be unable to find a file on the CD simply type **D:\win95\** into the **Other Locations** box and click **OK**.

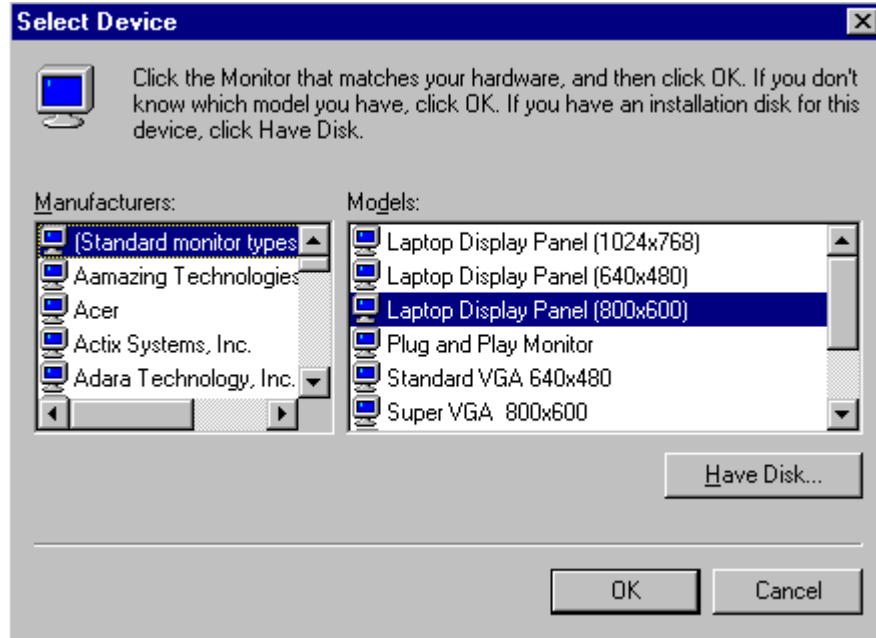
### ***Using external monitors.***

Somewhat suprisingly windows 95 does not hold monitor information in its hardware profiles. This means you will have to manually select your monitor every time you change it.

***It is possible to damage your laptop panel screen by "overdriving" it, please ensure you always have the correct monitor type configured on your system.***

Boot the machine on the docking station with the external monitor connected. The machine will detect it this and only use the external monitor. Allow windows to boot. Right Click on any clear part of the desktop. You will see a small menu, click on properties on this menu. This will invoke the **Display Properties** screen, Click on the **Settings** tab. Click on the **Advanced Properties** tab. This raises a new window, click on **Monitor** and click on **Change**. You will see a selection of makes and models, select your monitor here. Click **Apply** and then **Close**. Select **Apply** on the next window and then **Close**. Windows may wish to restart if it does allow it. You will now have the full range of options supported by your external monitor.

Before removing the machine from the docking station remember to re-select the **Laptop Display Panel 800 x 600** as above to avoid damaging your panel.



Resetting the Monitor for undocked use

N.B Most problems with no display on internal and external monitors can be solved by using the **FN + F6** keys to cycle through the display settings. Inadvertently running an LCD panel with the wrong driver should not damage it.

***EXTRA: Additional information.***

---

To mount the Floppy disk drive into the docking station. First ensure that **External FDD** option is enabled in the BIOS. If you do not have this option you must contact Technical Support to arrange for your machines BIOS to be upgraded.

Note that in order to use the Floppy drive in this location you must have the drive printer switch in the drive position. You may find that some of your PCMCIA cards do not appear in your docked hardware profile. This can be solved by checking that the devices are set to be available in all hardware profiles. This can be set via the devices properties in device manager.

We hope the above information is sufficient to enable you to install your Docking Station. Meanwhile if you have any problems do not hesitate to contact our Technical Support Department.