

# Installing Drivers for Windows 95 on the AJP 6200 Computer

## **PREPARATION: What do you need for the installation?**

---

You will need the **Windows 95 CD-ROM**, the **Multimedia Notebook CD-ROM** and the **ALI MPEG Driver** (if machine has MPEG) floppy disk.

## **STEP 1: Remove any PCMCIA cards**

---

If you have already inserted any PCMCIA cards into any of the sockets, remove them using the eject buttons located alongside the sockets.

## **STEP 2: Installing the Display driver**

---

Insert the **Multimedia Notebook CD ROM**. Right click on any clear part of the screen and click on **Properties**. You will now see the **Display Properties** window. Click on the **Settings** tab and click on the **Advanced Properties** button. In the **Adapter** window click on the **Change** button. Click on the **Have Disk** button and on the next screen click the **Browse** button. Enter the line **d:\video\95drv-e** into the **Copy manufacturers' files from** box and click **OK**. Make sure that on the next screen the **Model** is selected as the **Trident 9660/968x/938x, Linear Accelerated for PCI (vx.xx.xx TW.xx)** and click on **OK**.

Now click on the **Monitor** tab and click on the **Change** button. In the next window leave the **Manufacturers** on **Standard monitor types** but change the **Model** to **Laptop Display Panel (800 x 600)** and click **OK**. In the next window click on **Close**. This will take you back to the **Display Properties** window. Click on the **Desktop area** and move the arrow to the **800 by 600** end. Now click on **Close**. You will see a window telling you to restart your computer. Click on **Yes**. Your display is now setup.

## **STEP 3: Installing the Sound drivers**

---

Insert the **Multimedia Notebook CD ROM**. Click on the **Start** button, go to **Settings** and click on **Control Panel**. Double click on the **System** icon. In the **System Properties** window click on the **Device Manager** tab. Once in **Device Manager** check for an **Other Devices** heading. If it is present, double-click it to open the heading and remove any Unknown Devices that may be present by single-clicking them and pressing the **Del** key. Click **Yes** to confirm. Next, open the **Sound, Video and Game Controllers** heading in the **Device Manager** and remove anything inside it except for the **Gameport Joystick**.

Now click on the **Control Panel** window to make it active, then double click on the **Add New Hardware** icon. This will open the **Add New Hardware Wizard**. Click on the **Next** button. You will be asked if you want Windows to search for new hardware. Click on **No** and then click **Next**. You will now see a list of hardware types. Move down and double click on the **Sound, video and game controllers** section. In the next screen click on **Have Disk** button and enter the line **d:\audio\95drv** into the **Copy manufacturer's files from box** and click **OK**. Now click on **ESS ES 1788 Plug and Play AudioDrive** and then click **OK**. On the next screen click on **Finish**. Once Windows copies the drivers it will find the sound card again and attempt to install the driver from the **Windows 95 CD-ROM**. When this happens click on **OK** and then on **Cancel**. Windows will now ask you to restart your computer. Click on **Yes**.

When the computer reboots go to **Control Panel** and click on **Device Manager**. Under **Sound, video and game controllers** check whether you have two **ESS ES1788 Plug and Play AudioDrives**. If you do, delete the one with the yellow circle and the exclamation mark in it. Your sound card is now setup.

## **STEP 4: Installing the MPEG card drivers (if supplied)**

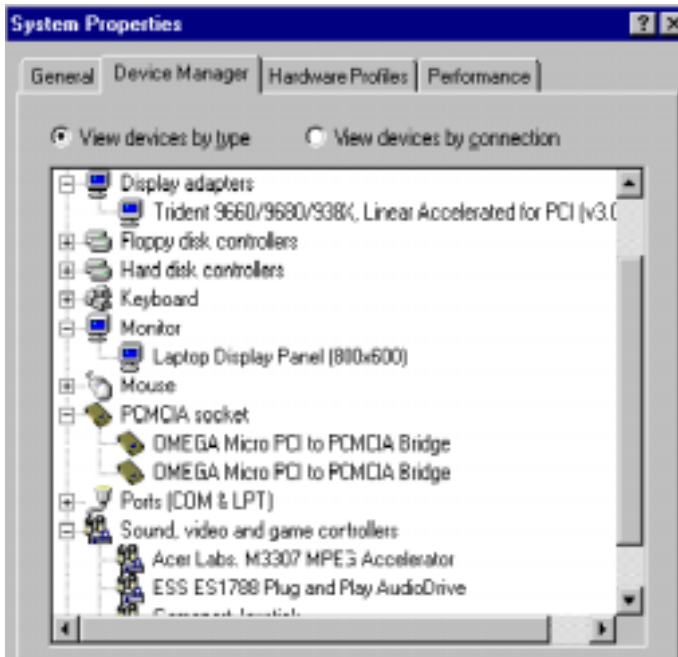
---

Insert the **Multimedia Notebook CD ROM**. Go to **Device Manager** and double click on **Other Devices**. Remove the **PCI Multimedia Video Device**. Now click on the **Start** button. Click on **Shut Down**. Select **Restart the computer** and then click on **Yes**. When the computer restarts, Windows 95 will find a **PCI Multimedia Device** and start the **Update Device Driver Wizard**. Click on the **Next** button. On the following screen click on **Other Locations** and enter **a:\** into the **Location** box and click **OK**. Windows 95 will find the **Acer Labs. M3307 MPEG Accelerator**. Click on **Finish**. You will now be asked to insert the disk labelled "**MPEG Install Disk**". Click on **OK**. Once you have inserted the floppy disk labelled **ALI MPEG Driver**, you will now see the **Copying Files** window. Insert **a:\** in the **Copy Files from** box and click on **OK**. Windows will now copy the driver and ask you to restart the computer. Remove the floppy disk and click on **Yes**. Once the computer boots you will see a **Caution** message warning of a potential problem. Click on **Yes**. You will also see a window called **Ali MPEG Driver**. Click on **OK**. Once you have done this you will see the Ali MPEG Driver Group. This can also be closed. Your MPEG card is now setup.

## **STEP 5: Installing the PCMCIA Socket Drivers**

---

Insert the **Multimedia Notebook CD ROM**. Make sure that you have removed any PCMCIA cards from the notebook before you install the drivers.



Go to **Device Manager** and double click on **Other Devices**. Remove both **PCI PCMCIA Bridges**. Now restart your computer. Windows will now find the **PCI PCMCIA Bridge**. Click **Next**. Windows will be unable to locate the driver for this device. On the next screen click on the **Other Locations** button and enter **d:\pcmcialw95omega** into the location box, then click **OK**. Windows will now report that it has found the device. Click **Finish**. You will now be asked for the Windows 95 CD-ROM. Insert it and click **OK**. Sometimes Windows reports that it cannot find the driver. If this should happen make sure that Windows is pointing at **d:\win95** and then click on **OK** two or three times. Windows will see the file and load it. Windows will now report that it has found another device. Click **Next**. Windows will be unable to locate the driver for this device. Insert the Multimedia CD-ROM disk back into the drive and on the next screen click on the **Other Locations** button and enter **d:\pcmcialw95omega** into the location box. Click **OK**. Windows will now report that it has found the device. Click **Finish**. You will now be asked for the Windows 95 CD-ROM. Insert it and click **OK**. Now go to **Control Panel** and double click on **PC Card (PCMCIA)**. On the next screen answer **NO** and click **Next**. Do the same for the next screen. You will now be asked to click **Finish**. Once you do this you will be asked to shut down Windows and turn

your computer off. Click on **Yes**. Now turn your computer on. Your PCMCIA sockets are now setup.

## NOTES

This tutorial presumes you are using the OSR/2 release of Windows 95. This is the "OEM Only" version supplied by AJP and other dealers. The version A release of Windows 95 has several cosmetic changes (such as buttons bearing different legends). However it should be simple to apply the procedure to a machine running version A.

## Appendix: *Installing the Windows 95 operating system*

Please think carefully before re-installing Windows 95 on your machine. Problems can often be resolved without resorting to this. If in doubt contact AJP Technical Support.

There are two ways to re-install Windows 95 as supplied by AJP,

**Installing from inside Windows 95** - Running the setup program will theoretically keep all your programs and data (AJP CAN NOT BE HELD LIABLE FOR ANY INFORMATION HELD BY YOUR SYSTEM IN ANY WAY. SEE YOUR 95 MANUAL FOR MORE DETAILS). It may keep some drivers. Installing in this way will not replace the registry and/or systems files and so may not cure all the problems you might be experiencing.

**Full install** - Booting the system from the supplied CD-ROM Setup Boot Disk with the CD in the drive will wipe your hard disk and install a totally bare version of 95. This installation should only be attempted as a last resort. Back up all important data before attempting this.

AJP CAN NOT BE HELD LIABLE FOR ANY CONSEQUENCES THAT MIGHT ARISE FROM ATTEMPTING ANY OF THE ABOVE PROCEDURES. THE INFORMATION IS PROVIDED ON AN AS IS BASIS. PLEASE READ YOUR E.U.L.A IN THE WINDOWS DOCUMENTATION FOR FULL LEGAL DETAILS.

We hope the above information is sufficient to enable you to setup your computer. Meanwhile, if you have any problems do not hesitate to contact our Technical Support Department.

Telephone	0208 - 208 – 9799
Fax	0208 - 208 – 9717
Email	<a href="mailto:support@ajp.co.uk">support@ajp.co.uk</a>
Web	<a href="http://www.ajp.co.uk">www.ajp.co.uk</a>
Mon – Fri	9:00 - 5:30