

## **Installing the D-Link 660 Ethernet Card and the Apex Clipper Com Modem on Windows NT4.0 Server/Workstation**

### ***Before installing NT4.0***

---

Enter the BIOS by pressing DEL when the machine is powered on. Click on the Peripheral icon and then change the Audio IRQ to 7 (default value is 5). The parallel port IRQ should also be set to IRQ 7 (the default is 7). It is also suggested that you disable the on-board midi port.

**Remove all PCMCIA cards before the installation.**

### ***Installing NT4.0***

---

The installation will depend on your particular requirements and is quite straight forward, however, when you are given the option 'Do not connect to the network at this time' please select it.

Once the installation is complete, install the video driver that is on the 'Windows VGA Driver' disk in the directory 'a:\nt40'. Re-start the machine and choose the appropriate resolution.

Now install the PCMCIA fix for the 7200. This can be obtained as part of Service pack 3 or as an individual hotfix. Both files are available from Microsoft's web site [www.microsoft.com](http://www.microsoft.com) or ftp site <ftp.microsoft.com>

### ***Installing the network card and modem card***

---

Insert Disk 2 of the D-Link 660 Ethernet card into your floppy drive. Go to Control Panel and click on Network. A screen requesting the cards installation disk screen will be displayed, select Yes to install. Once the disk is in the floppy drive

You will then be presented with the 'Network Set-up Wizard', click on 'Select from List' and then on 'Have disk'. Insert the path for the drivers as 'a:\nt40'

The driver for the D-Link card will be selected click OK to install the driver.

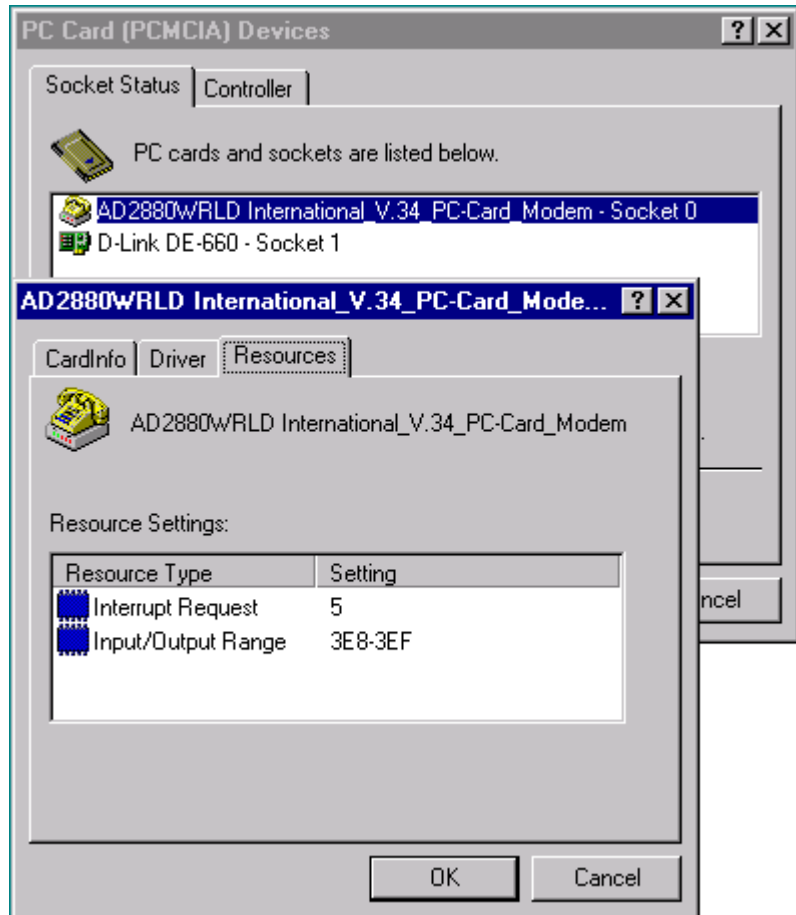
Shut down the machine and then insert your PCMCIA modem and Ethernet card. Re-start your machine the modem and the cards should be installed and configured. You can check the settings with PC Card within Control Panel.

Ensure that the settings on your machine match the ones shown on the left (D-Link DE-660 Adapter Set-up).

Press continue to complete the installation, you will then be prompted to install various services and protocols. The services will depend on the network you want to connect to. Speak to your systems administrator for this information.

The modem can be set-up via PCMCIA devices as shown on the right. The settings must be exactly as shown. The Interrupt Request should be set to 5. Input/Output Range must be set to 3E8-3EF.

It doesn't matter which slot you use for which card but please bear in mind that NT4.0 does not support "hot-swapping" cards so the machine must be turned off before changing or moving cards.



AJP CAN NOT BE HELD LIABLE FOR ANY CONSEQUENCES THAT MIGHT ARISE FROM ATTEMPTING ANY OF THE ABOVE PROCEDURES. THE INFORMATION IS PROVIDED ON AN AS IS BASIS. PLEASE READ YOUR E.U.L.A IN THE WINDOWS DOCUMENTATION FOR FULL LEGAL DETAILS.

We hope the above information is sufficient to enable you to set-up your 7200. Meanwhile if you have any problems do not hesitate to contact our Technical Support Department.

Telephone 0181 - 452 - 9090  
Fax 0181 - 450 - 6360  
Email support@ajp.co.uk  
Web www.ajp.co.uk

Telephone Technical Support Hours,  
Mon - Fri 9:00 - 1:00, 2:00 - 5:30