

Installing Drivers for Windows 98 on the AJP 8500P computer.

PREPARATION: What do you need for the installation?

You will need the **Windows 98 CD-ROM** and the Multimedia Notebook CD-ROM that came with your notebook.

STEP 1: Remove any PCMCIA cards

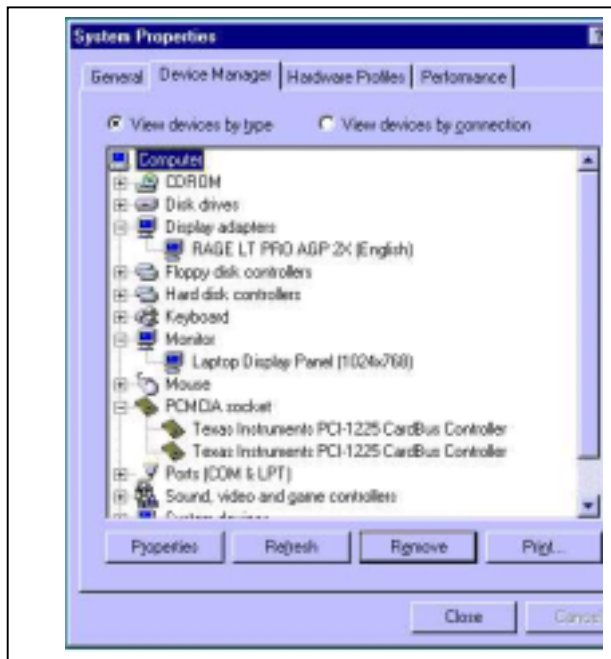
If you have already inserted any PCMCIA cards into any of the sockets, remove them using the eject buttons located alongside the sockets.

STEP 2: Installing the Display driver

Insert the driver CD ROM. Right click on any clear part of the screen and click on **Properties**. You will now see the **Display Properties** window. Click on the **Settings** tab and click on the **Advanced...** button. In the **Adapter** window click on the **Change** button and click **Next**. In the **Update Device Driver Wizard**, Click **Next**. **Search for a better driver (Recommended)** should be highlighted. Click **Next**. Enter the line **d:\video\win9x**. Click **Next** twice. The files will be copied across. **RAGE LT PRO AGP 2X (English)**, should be the driver that has been selected. Click **Finish** and say **Yes** when prompted to restart the computer.

To Select Monitor.

Right click on any clear part of the screen and select **Properties** from the bottom of the menu. You will now see the **Display Properties** window. Click on the **Settings** tab and click on the **Advanced** button. On the next this **Settings Window** Select the **Monitor** tab and click on **Change**. On the next screen select **(Standard Monitor Types)** under **Manufactures** and then **Laptop Display Panel (1024x768)** from the list of **Models**, click **OK**. Now click on **Apply** and then **OK**. To take you back to the **Display Properties** window. Change the desktop area to the correct resolution by clicking on **Desktop area** and dragging the arrow to **1024 by 768**. Finally you ought to set the machine to configure a reasonable amount of colours by setting **Colour Palette** to **True Colour (32bit)**. To fix all of these changes click on **Apply**. You will be able to **Apply the new colour setting without restarting**. On the next screen click **Yes** to keep setting, then click **OK**.



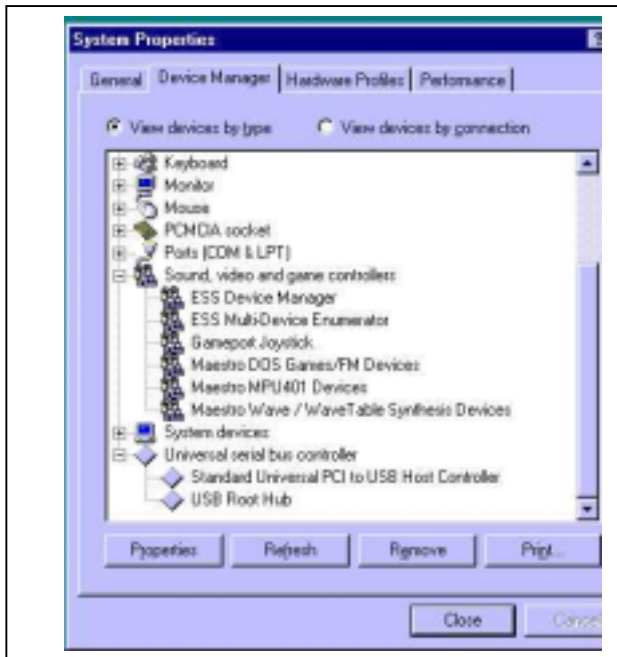
If you find that the screen font is too small, go to **Display Properties**, **Settings** then **Advanced** and under **Font size** select **Large Fonts**, click on **Apply** (you will be asked to restart for this to take affect).

STEP 3: Installing the Sound drivers

Insert the driver CD ROM. Click on the **Start** button, go to **Settings** and click on **Control Panel**. Double click on the **System** icon. In the **System Properties** window click on the **Device Manager** tab. Once in **Device Manager** double click on the **Other devices** heading. Double click on **PCI Multimedia Audio Device**. Click on the **Driver** tab then click on **Update Driver**. At the **Update device driver wizard** window. Click **Next**. **Search for a better driver (Recommended)** should be highlighted. Click **Next**. Place a tick in **CD-ROM DRIVE AND Specify a location**. Click **Browse**. Type **D:\audio\win9x** then click **OK**. Click **Next** twice. Files will be copied from the CD-ROM. New hardware will be found. The computer will then ask for the Win 98 CD. Click **OK**. Then click **Finish**. The sound driver is **ESS Maestro PCI**.

STEP 4: Installing the PCMCIA Socket Drivers.

Insert the driver CD ROM. Make sure that you have removed any PCMCIA cards from the notebook before you install the drivers. Go to **PCMCIA Socket** and click on one of the two **CardBus controllers**. Then go to **Properties**.



Click on the **Driver** tab. At the bottom left there should be an option that says **Update Driver**. At the **Update device driver wizard** window. Click **Next**. **Search for a better driver (Recommended)** should be highlighted. Click **Next**. Place a tick in **CD-ROM DRIVE AND Specify a location**. Click **Browse**. Type **D:\pcmcialwin98** then click **OK**. Click **Next** twice. Files will be copied from the CD-ROM. The computer will then ask for the Win 98 CD. Click **OK**. Then click **Finish**. Repeat for the second cardbus controller. . You should have two items listed. Both saying **Texas Instruments PCI-1225 Cardbus Controller**.

Your PCMCIA sockets are now setup.

NOTES

This tutorial presumes you are using Windows 98. This

is the "OEM Only" version supplied by AJP.

Appendix: Installing the Windows 98 operating system.

Please think carefully before re-installing Windows 98 on your machine. Problems can often be resolved without resorting to this. If in doubt contact AJP Technical Support.

There are two ways to re-install Windows 98 as supplied by AJP,

Installing from inside Windows 98 – AJP do NOT suggest this method. Running the Setup program will theoretically keep all your programs and data (AJP CAN NOT BE HELD LIABLE FOR ANY INFORMATION HELD BY YOUR SYSTEM IN ANY WAY. SEE YOUR 95 MANUAL FOR MORE DETAILS). It may keep some drivers. Installing in this way will not replace the registry and/or systems files and so may not cure all the problems you might be experiencing. This method of installation may cause problems as many programs, (such as Internet Explorer 4.x amongst others), install updated systems files on your machine, re-installing the older versions of these files **WILL** cause problems.

Full install – Fdisking or re-formatting your hard drive and then booting the system from the supplied CD-ROM Setup Boot Disk with the CD in the drive will wipe your hard disk and install a totally bare version of 98. This installation should only be attempted as a last resort. Back up all important data before attempting this. An AJP TS document is available covering this procedure (**Using Fdisk to Reinstall a System**).

AJP CAN NOT BE HELD LIABLE FOR ANY CONSEQUENCES THAT MIGHT ARISE FROM ATTEMPTING ANY OF THE ABOVE PROCEDURES. THE INFORMATION IS PROVIDED ON AN AS IS BASIS. PLEASE READ YOUR E.U.L.A IN THE WINDOWS DOCUMENTATION FOR FULL LEGAL DETAILS.

We hope the above information is sufficient to enable you to setup your 8500P. Meanwhile if you have any problems do not hesitate to contact our Technical Support Department.	
Telephone	0208 - 208 – 9799
Fax	0208 - 208 – 9717
Email	support@ajp.co.uk
Web	www.ajp.co.uk
Mon. – Fri.	9:00 - 5:30
Sat.	9:00 - 2:00