

Installing Drivers for Windows 95 on the AJP 8500 computer.

PREPARATION: What do you need for the installation?

You will need the **Windows 95 CD-ROM**, the five driver floppy disks that came with your notebook.

STEP 1: Remove any PCMCIA cards

If you have already inserted any PCMCIA cards into any of the sockets, remove them using the eject buttons located alongside the sockets.

STEP 2: Installing the Tx Chip driver

You need the floppy marked **WIN95 Video Driver, Tx Chip Driver** for this procedure.

Put the floppy in drive A:\ and access the **txpatch** directory. Double click the **Setup** program. You will now see a **Welcome** screen, click **Next**. You will now see the software license, read this and click on **File** and **Exit** and on the next screen click on **Yes** to continue. The **Intel 82371xB INF Update Installer** will now start, remove the floppy disk from the drive and click on **Next** then click on **OK**. The notebook will now reboot and Plug and Play your system, it will ask you to restart the computer, click on **Yes**. On rebooting you will see a message telling you that the **A:\ is not accessible** click on **Cancel**. The installation now finished.

STEP 3: Installing the Display driver

You need the floppy marked **AJP 8500 Updated WINDOWS 95 C&T 65555 VGA Driver** for this procedure.

Right click on any clear part of the screen and click on **Properties**. You will now see the **Display Properties** window. Click on the **Settings** tab and click on the **Advanced Properties** button. In the **Adapter** window click on the **Change** button. Put the floppy disk into the A: drive and click on the **Have Disk** button. Enter the line **a:** into the **Copy manufacturers' files from** box and click **OK**. Make sure that on the next screen the **Model** is selected as the **Chips and Tech 65555 PCI** and click on **OK**. The driver will now be installed. Click on **Close**. On the next screen click on the **Monitor** tab and click on the **Change** button. Leave the **Manufacturers** on **Standard monitor types** and the **Model** on **Laptop Display Panel (1024 x 768)** and click **OK**. Now click on **Close**. This will take you back to the **Display Properties** window. Click on the **Desktop area** and move the arrow to the **1024 by 768**. Now click on **Close**. You will see a window telling you to restart your computer. Remove the floppy from the drive and click on **Yes**. Your display is now setup.

If you find that the screen font is too small, go to **Display Properties, Settings** and under **Font size** select **Large Fonts**, click on **Apply**.

STEP 4: Installing the Sound drivers

You need the floppy marked **Audio Driver** for this procedure.

Click on the **Start** button, go to **Settings** and click on **Control Panel**. Double click on the **System** icon. In the **System Properties** window click on the **Device Manager** tab. Once in **Device Manager** double click on the **Other devices** heading and remove the two devices marked **Unknown Device**. You will now be asked if you want to restart Windows click on **Cancel**. Now click on the **Control Panel** window to make it active, then double click on the **Add New Hardware** icon. This will open the **Add New Hardware Wizard**. Click on the **Next** button. You will be asked if you want Windows to search for new hardware. Click on **No** and then click **Next**. You will now see a list of hardware types. Move down and double click on **Sound, video and game controllers**. In the next screen click on the **Have Disk** button and enter the line **A:\WIN95** into the **Copy manufacturer's files from** box and click **OK**. Now click on **ESS ES 1879 Plug and Play AudioDrive** and then click **OK**. You may get a message telling you the windows could not find a file, if this happens make sure that the **Copy files From:** box points to **D:\WIN95** and click **OK**. Once Windows copies the drivers it will ask you to restart your computer, remove the floppy from the drive and click on **Yes**. When the computer reboots go to **Control Panel** and click on **Device Manager**. Under **Sound, video and game controllers** remove the **ESS ES1879 Plug and Play AudioDrive** with the yellow circle and the exclamation mark on it. Your sound card is now setup.

STEP 5: Installing the PCMCIA Socket Drivers.

Make sure that you have removed any PCMCIA cards from the notebook before you install the drivers. You will need the floppy disk marked **PCMCIA Driver**. Go to **Device Manager** and under **PCMCIA socket** remove the **PCIC or compatible PCMCIA controller** now go to **Other Devices** and remove the two **CardBus controllers**. Now click on the **Refresh** button at the bottom of the **Device Manager** screen. You will now see a **Insert Disk** window asking you to **insert the disk labeled O2Micro Installation Disk** this disk is actually marked **PCMCIA Driver**. Once you have inserted the floppy click on **OK**. Make sure that the **Copy manufacturer's files from** is pointing at **A:** and click on **OK**. You will now be asked to insert the **Windows 95 CD-ROM** click on **OK**. Once the driver is installed click on **Close**. You will now be asked to restart your computer, take the floppy disk out of the drive and click on **Yes**. Once the notebook reboots go to **Control Panel** and double click on the **PC Card (PCMCIA)** icon. On the next screen answer **NO** and click **Next**. Do the same for the next screen. You will now be asked to click **Finish**. Once you do this you will be asked to shut down Windows and turn your computer off. Click on **Yes**. Now turn your computer

on. Your PCMCIA sockets are now setup.

NOTES

This tutorial presumes you are using the OSR/2 release of Windows 95. This is the "OEM Only" version supplied by AJP.

Appendix: *Installing the Windows 95 operating system.*

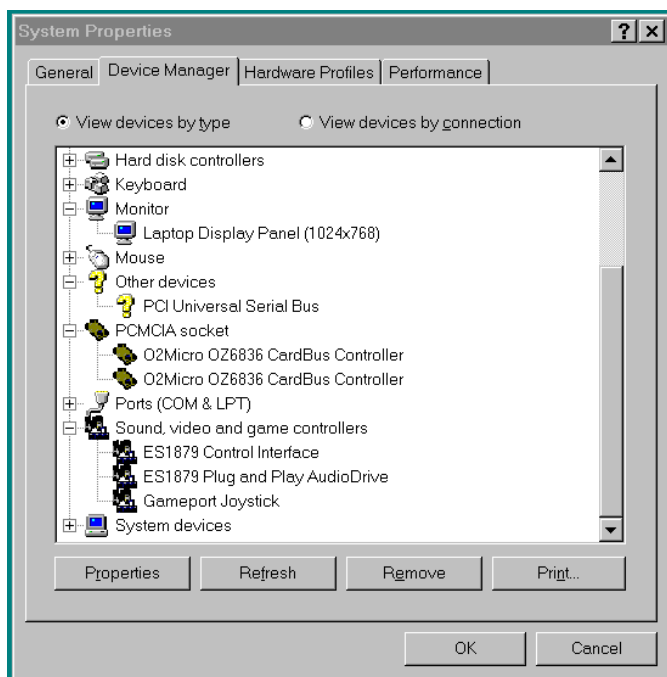
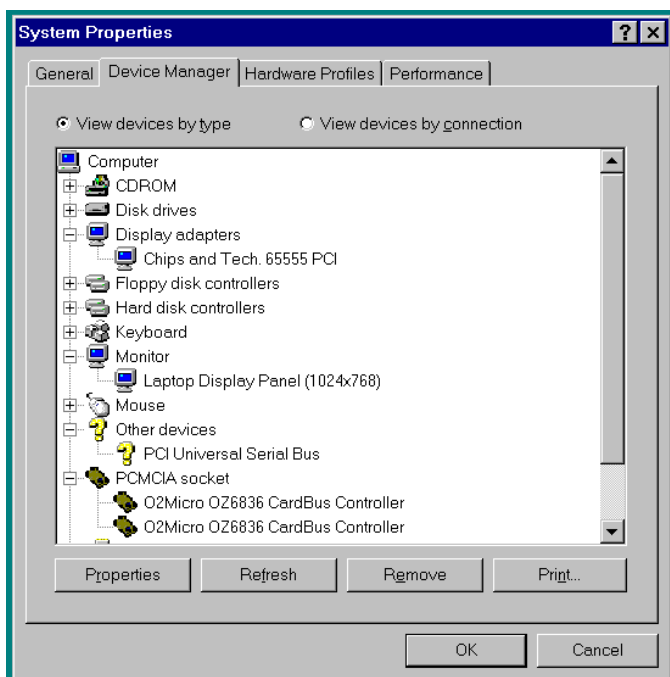
Please think carefully before re-installing Windows 95 on your machine. Problems can often be resolved without resorting to this. If in doubt contact AJP Technical Support.

There are two ways to re-install Windows 95 as supplied by AJP,

Installing from inside Windows 95 - Running the setup program will theoretically keep all your programs and data (AJP CAN NOT BE HELD LIABLE FOR ANY INFORMATION HELD BY YOUR SYSTEM IN ANY WAY. SEE YOUR 95 MANUAL FOR MORE DETAILS). It may keep some drivers. Installing in this way will not replace the registry and/or systems files and so may not cure all the problems you might be experiencing.

Full install - Booting the system from the supplied CD-ROM Setup Boot Disk with the CD in the drive will wipe your hard disk and install a totally bare version of 95. This installation should only be attempted as a last resort. Back up all important data before attempting this.

AJP CAN NOT BE HELD LIABLE FOR ANY CONSEQUENCES THAT MIGHT ARISE FROM ATTEMPTING ANY OF THE ABOVE PROCEDURES. THE INFORMATION IS PROVIDED ON AN AS IS BASIS. PLEASE READ YOUR E.U.L.A IN THE WINDOWS DOCUMENTATION FOR FULL LEGAL DETAILS.



We hope the above information is sufficient to enable you to setup your 8500. Meanwhile if you have any problems do not hesitate to contact our Technical Support Department.

Telephone 0208 - 208 - 9799

Fax 0208 - 208 - 9717

Email support@ajp.co.uk

Web www.ajp.co.uk

Mon. - Fri. 9:00 - 1:00, 2:00 - 5:30